

A 45 year old woman presents with shortness of breath, pelvic discomfort and blood stained PV discharge

Bloods: Hb 45 g/L, U&Es normal

What do you advise?

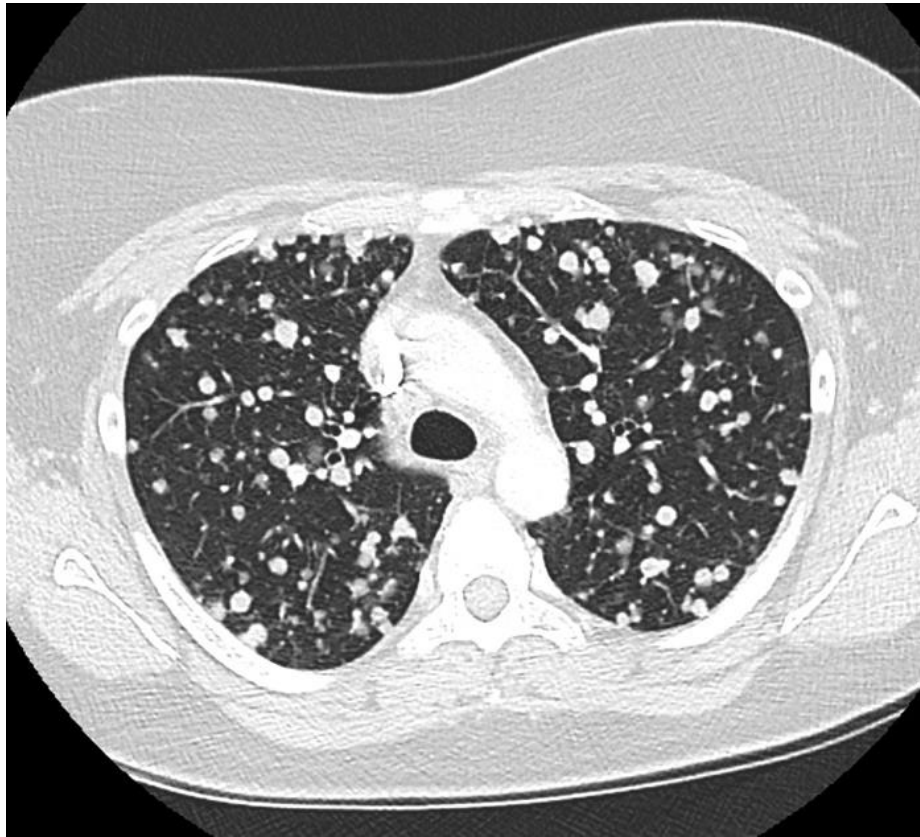
Comment on her MRI Scan



MRI Cervical tumour with vagina, bladder, uterus and parametria involved.

Biopsy G2 Squamous Cell Carcinoma

CT Lung metastases.



45 year old woman, PS 2 remains short of breath despite 5 unit blood transfusion.

Persistent pelvic discomfort and slight blood stained PV discharge.

What options do you discuss?

45 year old woman, PS 2 remains short of breath despite 5 unit blood transfusion.

Persistent pelvic discomfort and slight blood stained PV discharge.

She wants treatment what do you advise?

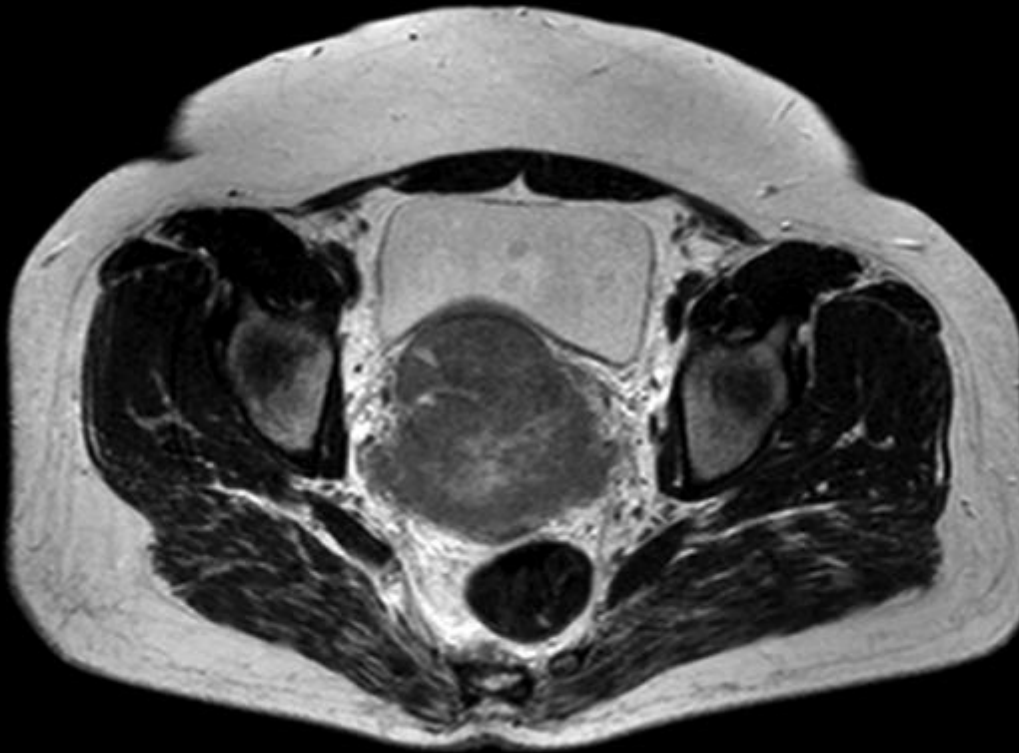
She commences Carboplatin and Paclitaxel
 You review her prior to cycle 5. She feels weak
 What do you advise ?

	Pre cycle 3	Pre cycle 5
Hb	117 g/L	111 g/L
Neuts	$1.7 \times 10^9/L$	$1.5 \times 10^9/L$
Platelets	$266 \times 10^9/L$ (150-400)	$231 \times 10^9/L$ (150-400)
Potassium	3.6 mmol/l (3.5 - 4.9)	2.3 mmol/l (3.5 - 4.9)
Creatinine	76 $\mu\text{mol/L}$ (60 – 110)	65 $\mu\text{mol/L}$ (60 – 110)
Albumin	31 g/L (37 – 49)	29 g/L (37 – 49)
Calcium	2.21 mmol/L (2.2 – 2.6)	1.7 mmol/L (2.2 – 2.6)

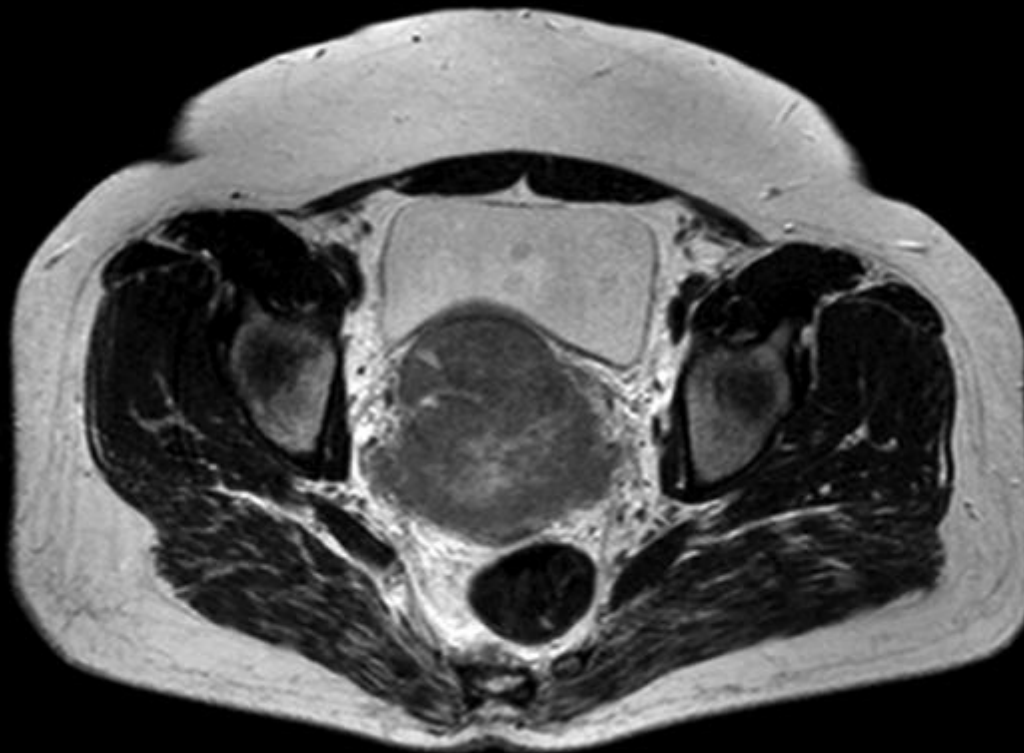
Following electrolyte replacement she has bleeding PV and worsening pelvic pain.

What do you advise ?

It is decided to treat with radiotherapy.
What dose, fractionation and beam arrangement do you advise?



It is planned as a parallel pair.
The specialist radiographer puts on the pelvic field.
Do you sign it off ?



It is planned as a parallel pair. The specialist radiographer puts on the pelvic field.
Do you sign it off ?

