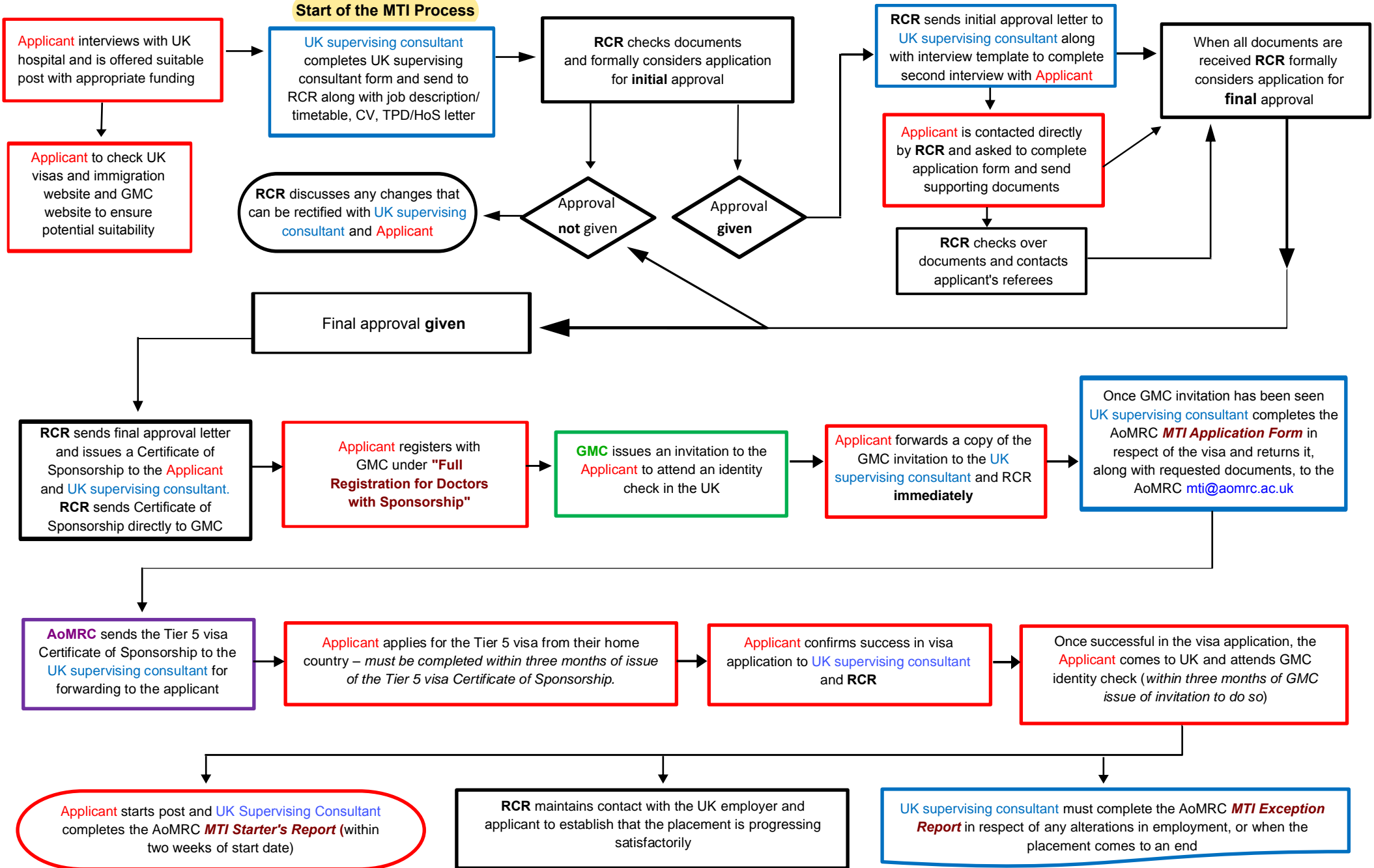


**MTI Process** Applicants and UK employers must read the Eligibility Criteria section to ensure that the applicant can meet the minimum eligibility requirements for the MTI, GMC registration and the visa

**Start of the MTI Process**



Applicant role in **RED**. RCR role in **BLACK**. UK Supervising Consultant role in **BLUE**. GMC role in **GREEN**.